

**Agency for Civic Engagement [ACE]
@ Woodbury University**

Architecture and Design
Projects for Social Causes

ACE connects students and faculty with nonprofit and governmental organizations that are dedicated to helping underserved communities. Students work collaboratively across Woodbury's disciplines to combine their skills and test their fields of study on real projects for the public good.

1

The Cabin Project

a horse ranch dedicated to working with developmentally
disabled children and veterans

taught by Sonny Ward and Jeanine Centuori

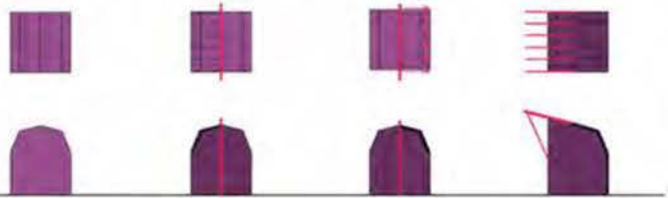




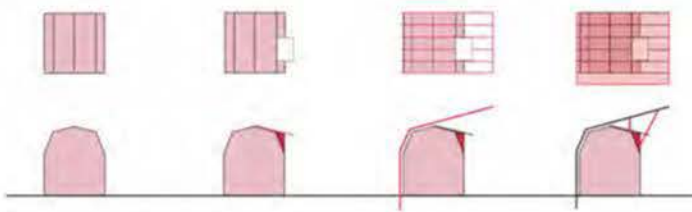




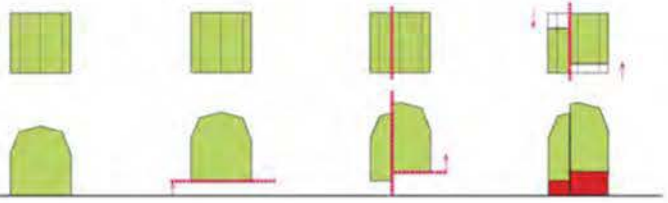




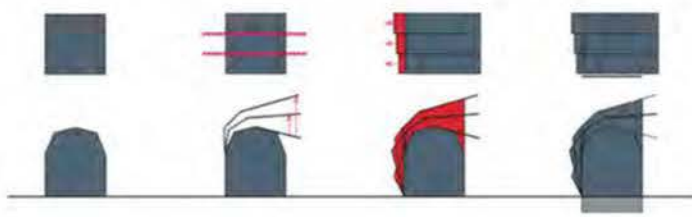
Sleeping Cabin 1:
Stargazing



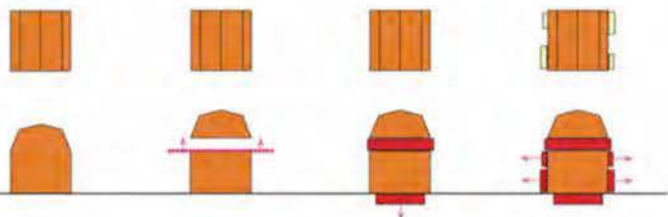
Sleeping Cabin 6:
Dining



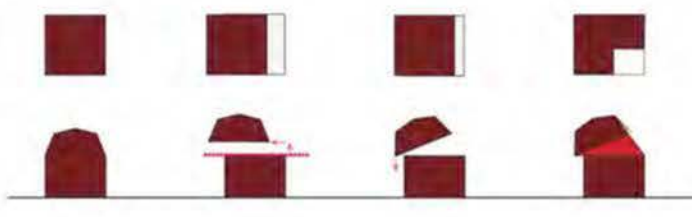
Sleeping Cabin 2:
Bird watching



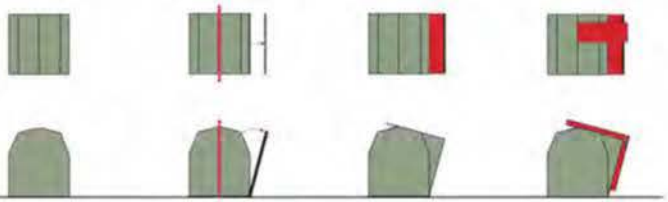
Sleeping Cabin 7:
Games



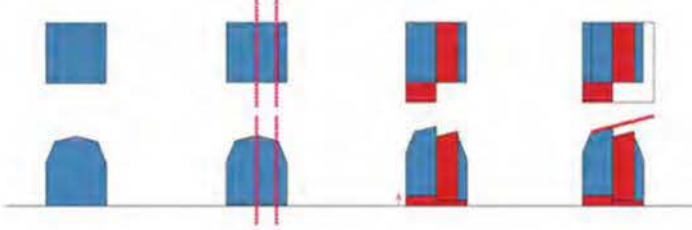
Sleeping Cabin 3:
Library



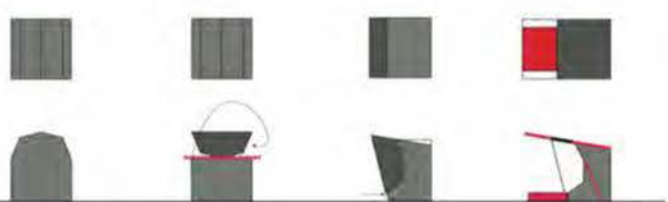
Sleeping Cabin 8:
Music



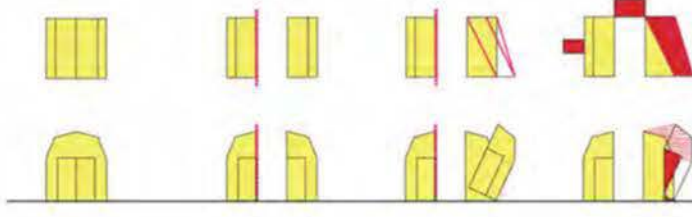
Sleeping Cabin 4:
Therapy office



Sleeping Cabin 9:
Bathroom Pavilion



Sleeping Cabin 5:
Performance



Cabin 10:
Kitchen Pavilion

CULTURE

10.04.13

TABLE OF CONTENTS




BOXER REBELLION

A new generation of architects makes affordable buildings with cardboard boxes and trash

By Alan Huffman

27



SHARE

New clients have sometimes wondered whether Sonny Ward was putting them on or just plain crazy. The Los Angeles-based architect recalls the reception he got from the directors of Camp Sister Spirit, a feminist retreat in rural Mississippi. They were anything but amused by his proposal to build them a cabin out of discarded

2

The Lath Project

Taking the Reins, a horse ranch and garden
dedicated to working with disadvantaged girls

taught by Sonny Ward and Jeanine Centuori









MONDAY, SEPTEMBER 16, 2013 AS OF 9:50 PM EDT

In Los Angeles, Architects Find That Disadvantaged People Like Nice Buildings, Too

By *Alan Huffman*

on September 07 2013 9:08 AM



A group of girls who participate at the Taking the Reins after-school program pose inside the lath house, which was designed and built by Woodbury University students and used to sprout seeds for a communal vegetable garden. Courtesy Taking the Reins

3

The Bowtie Project

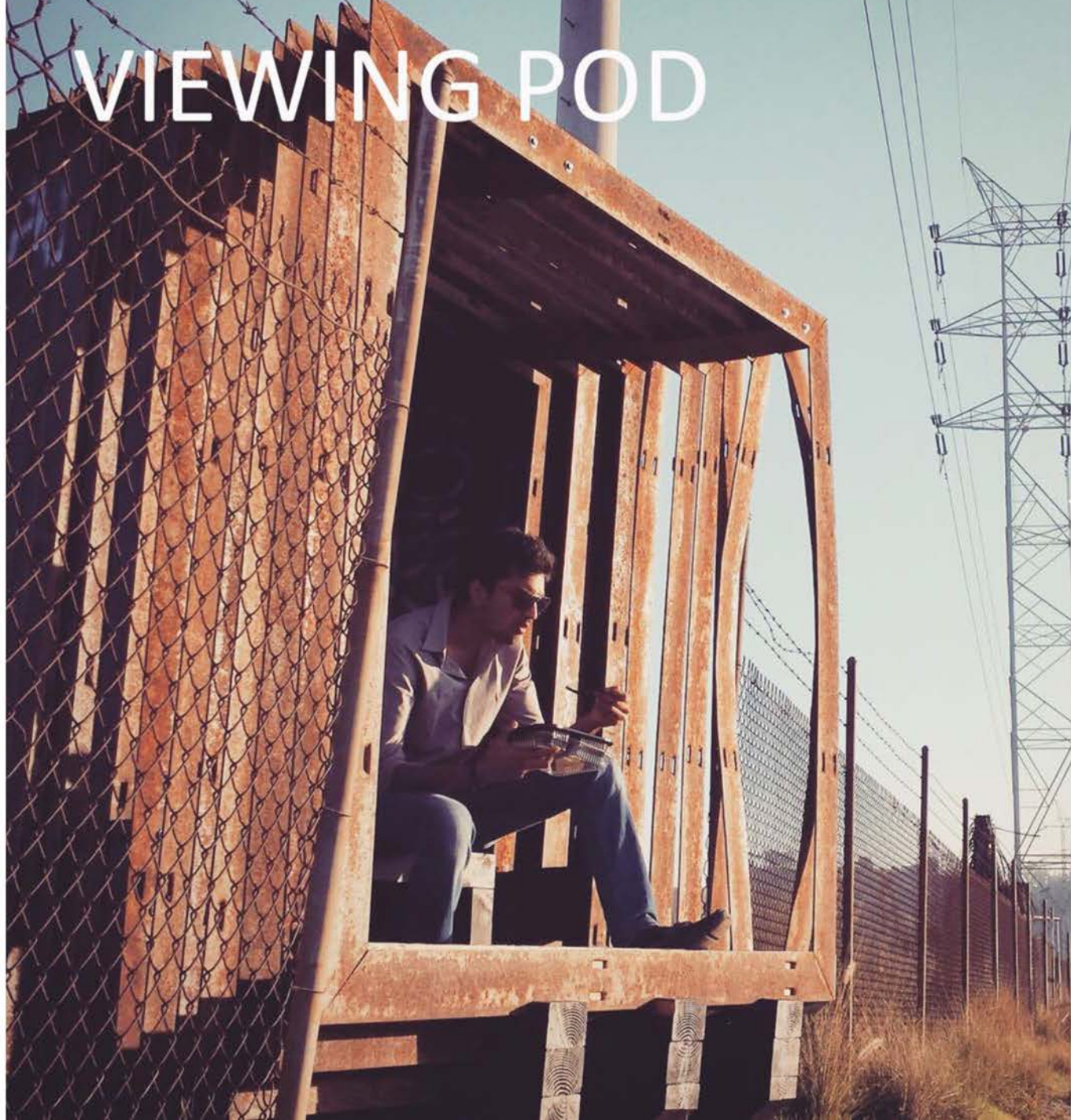
a collaboration with LA Dept of Recreation and Parks & Clockshop,
programming the Bowtie Parcel in preparation for a public park

taught by Elizabeth Timme, Stacey Rigley, and Jeanine Centuori

FIRE PIT | STAGE



VIEWING POD



TUNNEL VISION



ANGLE OF REPOSE



4

The Outdoor Classroom

a functional teaching and performance space
for the John Muir Middle School,
Burbank, CA

taught by Oscar Corletto and Jeanine Centuori









5

The Bento Box

a social space for Thomas Jefferson High School,
involving workshops with the high school students

taught by Oscar Corletto and Jeanine Centuori









Project Title: Bento Box (Woodbury University)

Studio Name: 4B

Tutors: Jeanine Centuori

Students: Andrew Ancira, Alex Kim, Jason Bravo, Ronnie Rubio

Country: USA



Bento Box is constructed for Thomas Jefferson High School in Los Angeles, California. Intended to spur the students' curiosity towards architecture and design, the project investigates how scaleable furniture can tackle programmatic requirements and direct social interactions.

6

Walk Watts

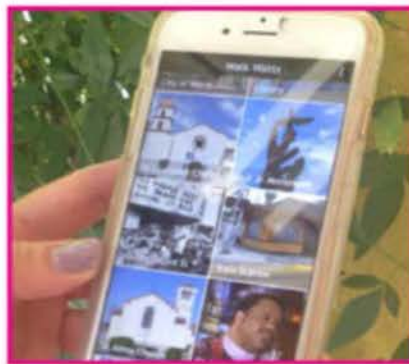
an internship project producing a pilot cell phone app
and installations in collaboration with
the Watts Labor Community Action Committee
by Cate Roman and Jeanine Centuori

HOLLA [Hear Our Local Legacy App]

1

A downloadable app peppered with stories from Watts elders, artists, and other stakeholders which correspond to location stops sited on the pocket map and marked in the environment by graphics.

Sound



Environmental Graphics | Teaser & Informational

2

Large teaser graphics will be dotted around the community with letters spelling out HOLLA. The informational signage that informs audiences to download the app will be panels fixed to sign posts.

Sight



Z-Fold Pocket Maps | Informational Rack Cards

3

Pocket maps with highlighted stops will be available at key locations within the community of Watts, especially those places that are frequented by tourists. Promotional rack cards will be available in LA hotels and tourist agencies.

Touch



Watts is more than riots and towers.



HOLLA [Hear Our Local Legacy App]

Proposed app design shown right. Each icon is a button that plays a recorded voice telling the story of a place, a time or a memory. The app will be created in Appypie and sound bites stored on Sound Cloud.

1 Sound

Stories include, but are not limited too:

Tim Watkins, President & CEO, WLCAC

The WLCAC | Past, Present & Future

Ted Watkins, Founder WLCAC

Leadership in the community

Charles Dickson, Artist

Martin Luther King, Jr. Monument

Shelia Thomas, Director, WLCAC

Programs at the WLCAC

Horace Leveritt, 103rd Street

Early years of Watts as its own city

Alma R Reeves, Educator/Elder

Alma R Reeves Watts Branch Library

Father Amde Hamilton, Community Leader

History of Watts Happening Coffee

House & the Writer's Workshop

Wajiha Bilal, Historic Train Station

Charles Mingus, Jazz Musician, play music track

Charles Mingus Youth Art Center

Charles Dickson, Artist

The Towers in the Trees

Aqeela Sherrills, Owner, Local

Roy Choi & the beginning of Local

Gilda Green-Hagood, Elder

Music in Watts

Lorenzo Hubbard, Preacher

St John's United Methodist Church

Carlos Spivey, Artist

Turtle Pond & the Garden Studio

Rosie Lee Hooks, Director

Watts Tower Art Center



To Be Continued...



Historic Train Station



St. John's Methodist Church

Environmental Graphics

As Holla is our app, this will be used as the call to action. Large teaser letters will be painted with exterior paint in key locations throughout the neighborhood. [Shown here installed with artist tape.] Aluminum informational signs with the call out will provide a compliment to the teasers.

2 Sight



Watts Branch Library



Local



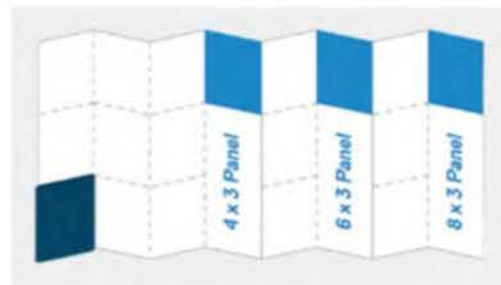
Historic Civic Center



Z-Fold Pocket Maps

3 Touch

The pocket maps will be produced by Z-Card with covers in each of the 4 colors of our palette plus black. They will be 8 x 3 panel, credit card size. All elements will print on Sappi paper stock.





Historic Civic Center



Historic Civic Center, detail



Mudtown Farms, Future Site



Historic Fire Station



Watts Coffee House



Historic Train Station

7

The Outdoor Classroom

an internship project for the Woodbury Campus
by Cate Roman and Jeanine Centuori











8

The Farmstand Project

an outreach project for the local growers of Ojai, CA

taught by William Ellsworth, Cate Roman and Jeanine Centuori,
facilitated by Sonny Ward



OJAI EATS FARM FRESH

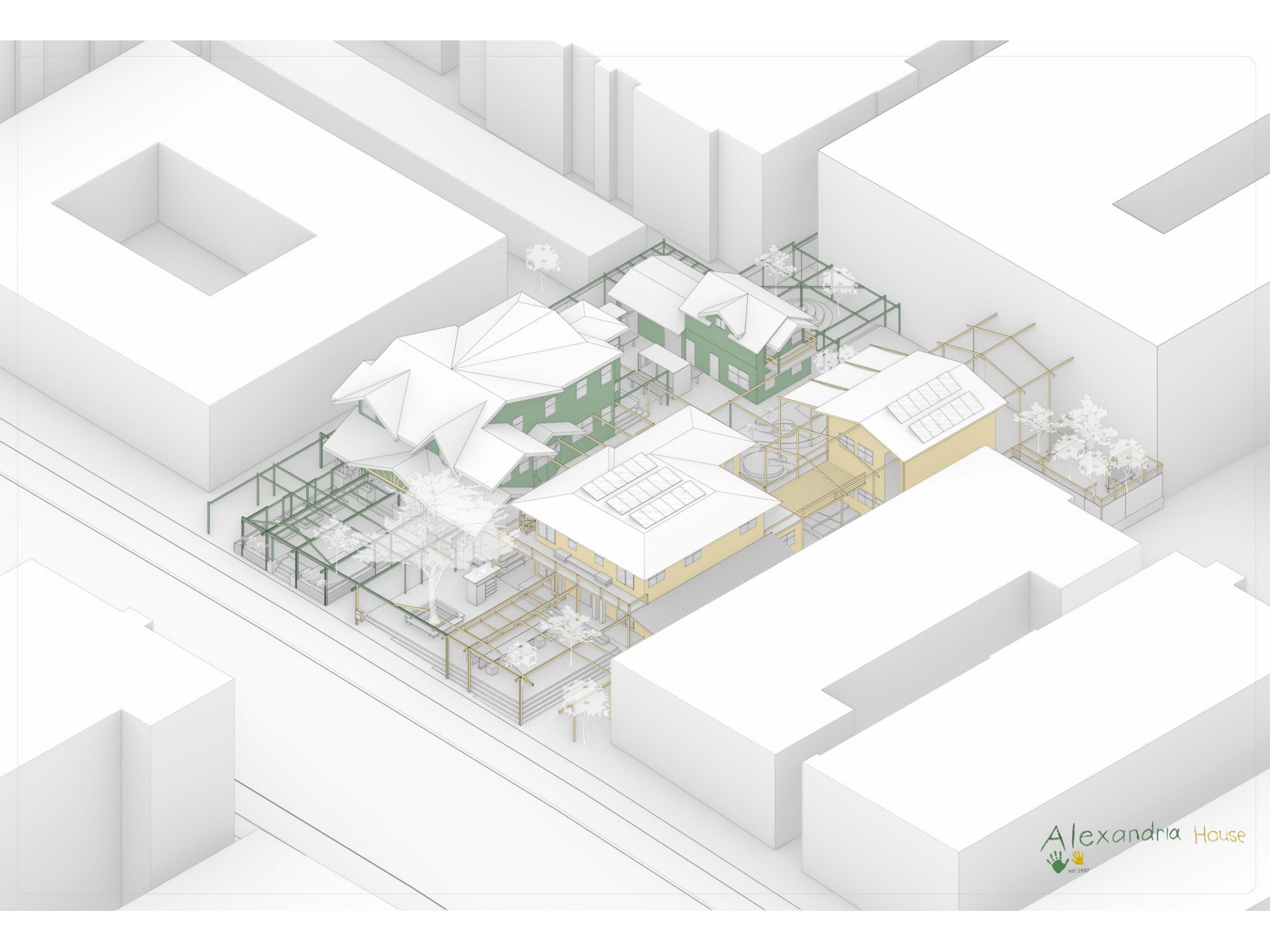


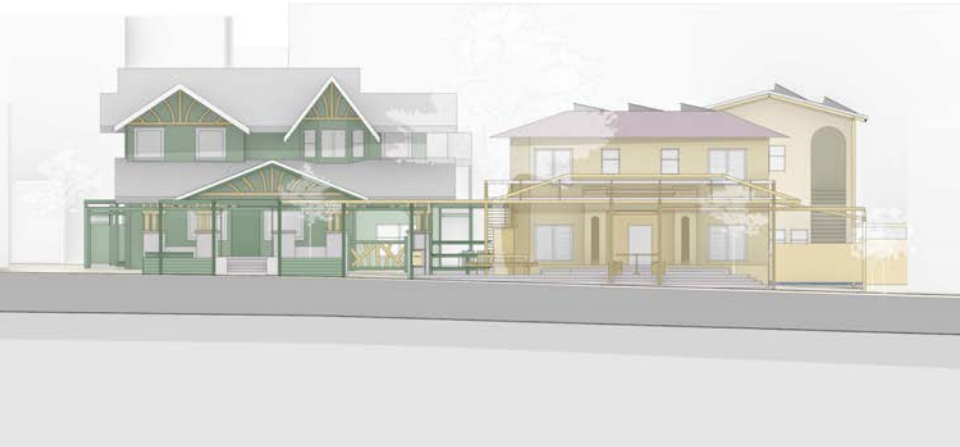
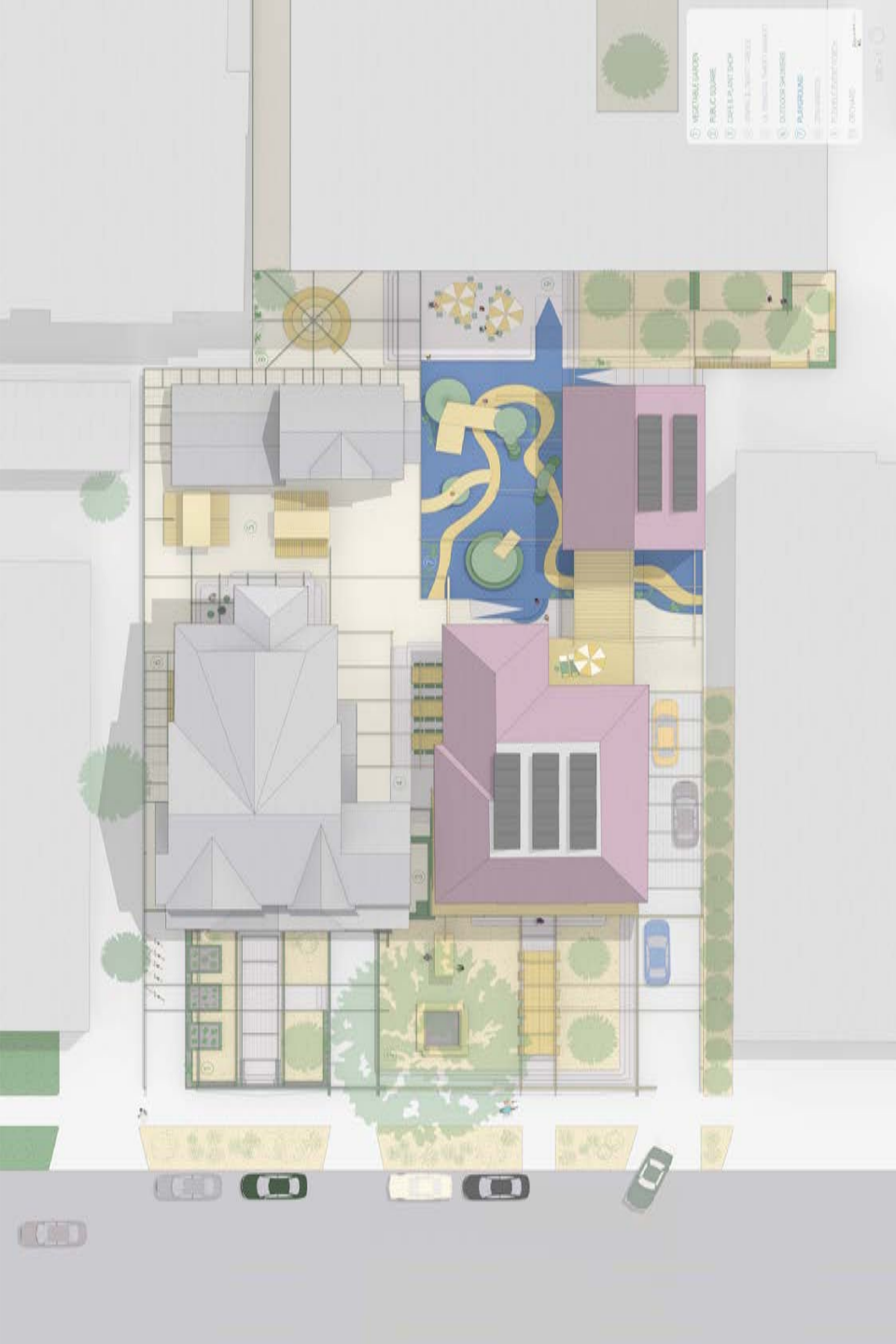
9

Alexandria House

an outreach design project for the Alexandria House,
dedicated to serving women and children experiencing
homelessness

taught by Paulette Singley









Agency for Civic Engagement [ACE]

Active engagement connecting students with communities