

WOODBURY
SCHOOL OF
ARCHITECTURE

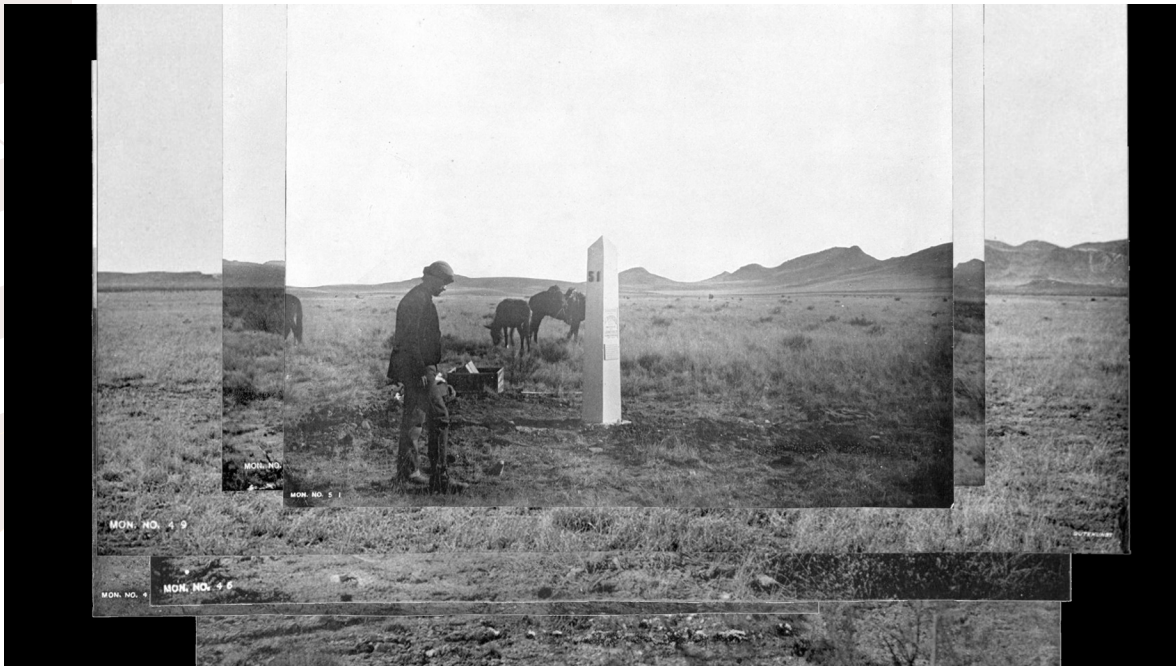
2017
FALL
EVENTS

11/9 6:00pm

6518 Hollywood Blvd. Los Angeles, CA 90028
WUHO Gallery

Attending Limits

The Constitution and Upkeep of the US–Mexico



Images: Nathan Friedman
Attending Limits

277 obelisk monuments mark the US–Mexico boundary line. Constructed in three distinct phases (1849–1856, 1891–1912, and 1964–1968), these monuments were the product of territorial negotiations, disputes that were settled ranging from the violent expansion of sovereign limits to the shifting course of a historic boundary river. Commissioned, inscribed, and placed by both the United States and Mexico, they served as unique bilateral artifacts that operated across and reflected on separate territories, forms of settlement, and philosophies

of nationhood. Attending Limits: The Constitution and Upkeep of the US–Mexico Border presents the international boundary through a history of its material artifacts and the modes of representation they have motivated. Through the display of original text, animation, photographs, scale models, and maps, the exhibition theoretically frames an evolution of the US–Mexico border from single line to geopolitical territory.